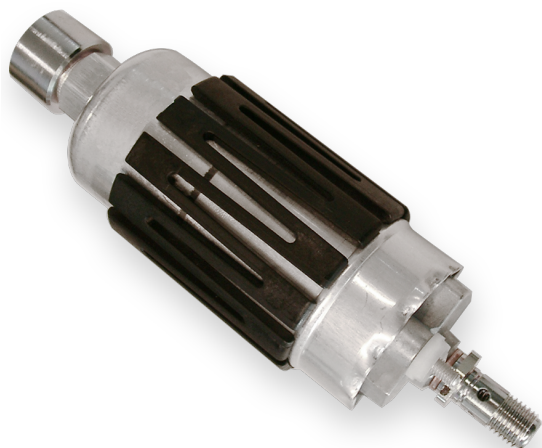


Fuel Pump FP 200-7



- ▶ >200 l/h
- ▶ Max. 7,5 bar
- ▶ 850 g
- ▶ Fuel lines screwed
- ▶ Internal pre-filter on suction side with 300 µm

The FP 200-7 is an inline roller cell pump for the installation outside the fuel tank (installation in the tank is not proven).

It is capable of providing 200 l/h at 7 bar. Bio-fuel can be delivered up to E100 (shortens lifetime!). The FP 200-7 is compatible with Gasoline and Diesel fuel. It is the replacement for the 0580.254.044 aftermarket fuel pump with higher performance.

Application

Fuel pressure	Up to 7,5 bar
Gasoline delivery rate at 5 bar and 22°C	>220 to 270 l/h
Diesel delivery rate at 7 bar and 22°C	>185 to 235 l/h
Pressure limiting valve	8,0 to 10,0 bar
Fuel compatibility	Up to E100 with shorter lifetime
Diesel compatibility	Given
Operating temperature range	-40 to 80°C ≤90°C for ≤5 h over 1.000 h lifetime ≤105°C for ≤1 h over 50 h lifetime
Storage temperature range	-30 to 60°C
Max. vibration IEC 60068-2-34	10 Hz 19,4 (m/s ²)/Hz 300 Hz 0,654 (m/s ²)/Hz 1.000 Hz 0,059 (m/s ²)/Hz

Technical Specifications

Mechanical Data

Diameter	60 mm
----------	-------

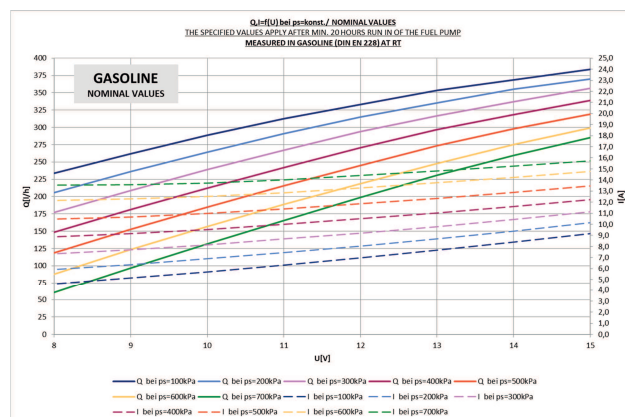
Length	197 mm
Weight	750 g
Mounting	Clamping

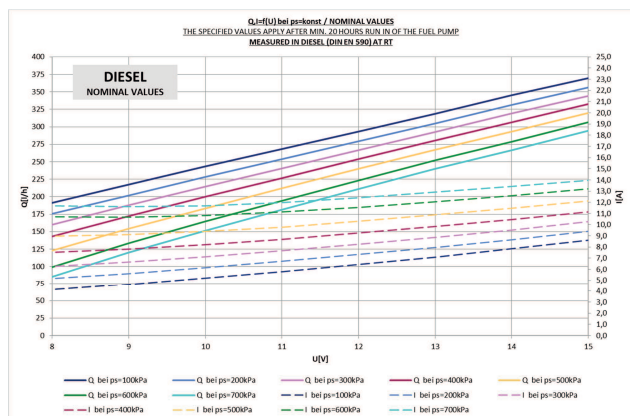
Electrical Data

Supply voltage	6 to 15 V (26 V for 60 s)
Operating voltage	13 V
Load current at 5 bar and 22°C	≤ 17 A

Characteristic

Color	Silver
Non-return valve	External
Fuel filtering	External, on pressure side
Over-pressure valve	Internal





Connectors and Wires

Electrical connector	+M4/-M5
Electrical mating connector	With ring wire M4 and M5

Mechanical connector intake side	M18x1.5
Mechanical connector pressure side	M12x1.5

Installation Notes

Up to E100 with shorter lifetime

For technical reasons the values may vary.

Please use within the specified limit values only.

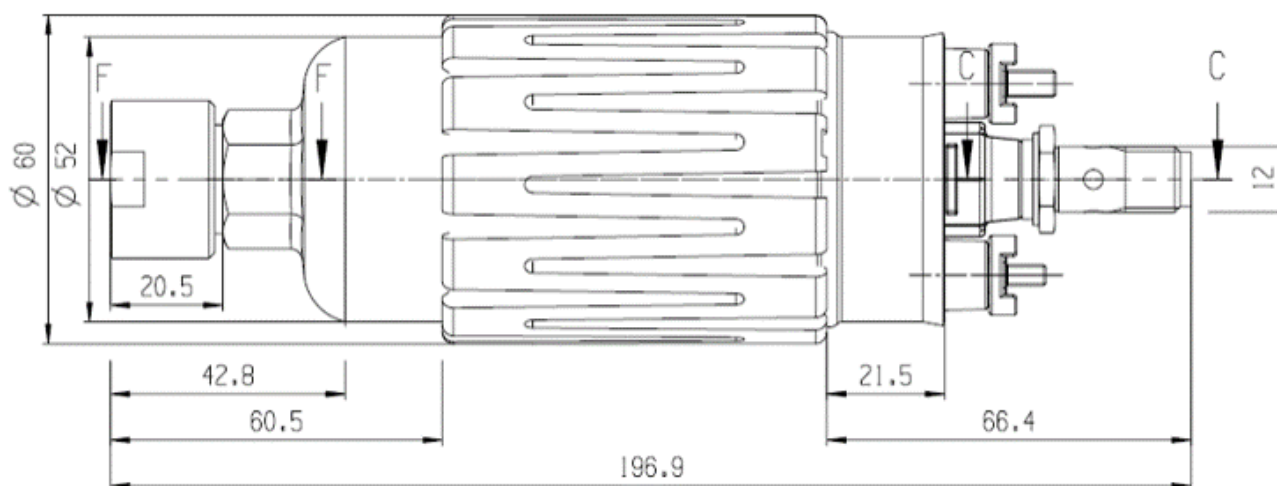
Please find further application hints in the offer drawing at our homepage.

Ordering Information

Fuel Pump FP 200-7

Order number **F.02U.V03.136-01**

Dimensions



Represented by:

Europe:
Bosch Engineering GmbH
Motorsport
Robert-Bosch-Allee 1
74232 Abstatt
Germany
Tel.: +49 7062 911 9101
Fax: +49 7062 911 79104
motorsport@bosch.com
www.bosch-motorsport.de

North America:
Bosch Engineering North America
Motorsport
38000 Hills Tech Drive
Farmington Hills, MI 48331-3417
United States of America
Tel.: +1 248 876 2977
Fax: +1 248 876 7373
motorsport@bosch.com
www.bosch-motorsport.com

Asia-Pacific:
Bosch Engineering Japan K.K.
Motorsport
18F Queen's Tower C, 2-3-5 Minato
Mirai Nishi-ku, Yokohama-shi
Kanagawa 220-6218
Japan
Tel.: +81 45 650 5610
Fax: +81 45 650 5611
www.bosch-motorsport.jp

Australia, New Zealand and South Africa:
Robert Bosch Pty. Ltd
Motorsport
1555 Centre Road
Clayton, Victoria, 3168
Australia
Tel.: +61 (3) 9541 3901
motor.sport@au.bosch.com