



# GSTN6-F (M6 femail)

Gear shift device, Tension/compression with analog & ON/OFF outputs

**Range**  $\pm 1000$  N  
**Overload**  $\pm 1500$  N  
**Accuracy** 5%

**Supply voltage** 5 to 16 V  
**Supply current** 8 mA  
**Analog signal (white wire)** 0 to 5\* V  
**Offset (no force)**  $2.5 \pm 25$  mV/N  
**Cut off frequency** 30 Hz  
**On/Off output (green wire)** NPN Open collector, normally open, max 16 V, 20 mA

**Debounce time** 30 msec

**Offset drift with temp** 10 mV

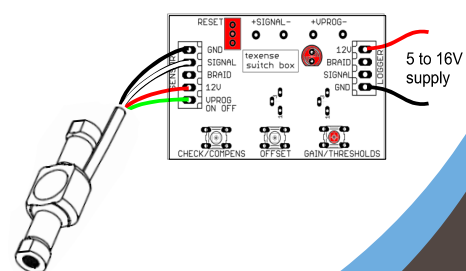
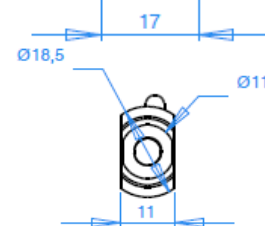
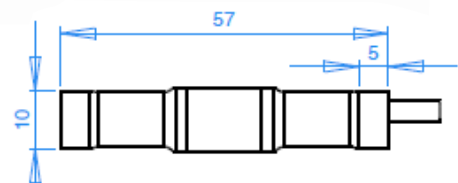
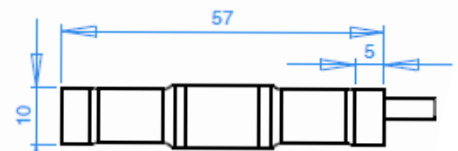
**Housing** Stainless steel  
**Dimensions** 57 x 11 x 18.5 mm  
**Weight (without cable)** 25 g  
**Protection** IP63

**Vibration test** 20 Gpp5"  
**Shock** 500 G  
**Operating temp** 0 to + 85°C  
**Storage temp** - 20 to + 125°C

1 m cable of 4x26AWG FEP  
 tinned copper braided cable 250V  
 200°C

**Red** Supply  
**Black** 0V  
**White** Analog signal  
**Green** On/Off signal  
**NPN** open collector  
**Braid** Connected to base

Calibration table	
Force (Newtons)	Signal (analog output)
-300	1'8
0	2'5
+300	3'2



In the interest of continuous product improvement, we reserve the right to alter without prior notice the specifications and features described on this document