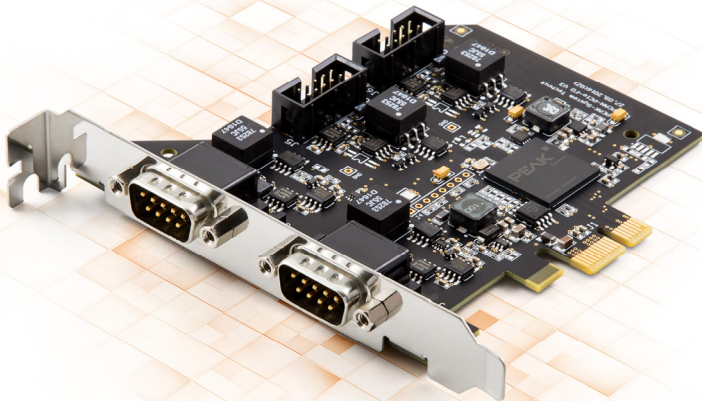


PCAN-PCI Express FD

CAN FD Interface for PCI Express

User Manual



Document version 1.3.1 (2019-08-08)

PEAK
System

Relevant products

Product name	Model	Part number
PCAN-PCI Express FD Single Channel	One CAN channel	IPEH-004026
PCAN-PCI Express FD Dual Channel	Two CAN channels	IPEH-004027
PCAN-PCI Express FD Four Channel	Four CAN channels	IPEH-004040

The cover picture shows the product PCAN-PCI Express FD Four Channel. Other product models have an identical form factor but vary in equipment.

PCAN® is a registered trademark of PEAK-System Technik GmbH. CANopen® and CiA® are registered community trade marks of CAN in Automation e.v.

All other product names mentioned in this manual may be the trademarks or registered trademarks of their respective companies. They are not explicitly marked by "™" and "®".

Copyright © 2019 PEAK-System Technik GmbH

Duplication (copying, printing, or other forms) and the electronic distribution of this document is only allowed with explicit permission of PEAK-System Technik GmbH. PEAK-System Technik GmbH reserves the right to change technical data without prior announcement. The general business conditions and the regulations of the license agreement apply. All rights are reserved.

PEAK-System Technik GmbH
Otto-Roehm-Strasse 69
64293 Darmstadt
Germany

Phone: +49 (0)6151 8173-20
Fax: +49 (0)6151 8173-29

www.peak-system.com
info@peak-system.com

Document version 1.3.1 (2019-08-08)

Contents

1	Introduction	5
1.1	Properties at a Glance	5
1.2	System Requirements	7
1.3	Scope of Supply	7
2	Installing the Software and the Card	8
3	Connecting a CAN Bus	10
3.1	Connection over D-Sub connector	10
3.2	Slot Bracket with D-Sub Connectors	12
3.3	Voltage Supply of External Devices	13
3.4	Activating the Daisy Chain	15
3.5	Activating the Internal Termination	19
3.6	Cabling	21
3.6.1	Termination	21
3.6.2	Example of a Connection	21
3.6.3	Maximum Bus Length	22
4	Software and API	23
4.1	Monitor Software PCAN-View	23
4.1.1	Receive/Transmit Tab	26
4.1.2	Trace Tab	28
4.1.3	PCAN-PCI Express FD Tab	29
4.1.4	Bus load Tab	30
4.1.5	Error Generator Tab	31
4.1.6	Status Bar	32
4.2	Linking Own Programs with PCAN-Basic Version 4 or Higher	33
4.2.1	Features of PCAN-Basic	34
4.2.2	Principle Description of the API	35
4.2.3	Notes about the License	36

5 Technical Specifications	37
Appendix A CE Certificate	39
Appendix B Dimension Drawing	40
Appendix C Quick Reference	41

1 Introduction

The plug-in card PCAN-PCI Express FD allows the connection of a PC with PCI Express slots to CAN FD and CAN networks. There is galvanic isolation of up to 500 Volts between the computer and CAN sides. The card is available as a single, dual, or four-channel version.

The new CAN FD standard (CAN with Flexible Data rate) is primarily characterized by higher bandwidth for data transfer. The maximum of 64 data bytes per CAN FD frame (instead of 8 so far) can be transmitted with bit rates up to 12 Mbit/s. CAN FD is downward-compatible to the CAN 2.0 A/B standard, thus CAN FD nodes can be used in existing CAN networks. However, in this case the CAN FD extensions are not applicable.

The monitor software PCAN-View and the programming interface PCAN-Basic for the development of applications with CAN connection are included in the scope of supply and support the new CAN FD.

Device drivers exist for different operating systems, so programs can easily access a connected CAN bus.



Tip: At the end of this manual (Appendix C) you can find a Quick Reference with brief information about the installation and operation of the PCAN-PCI Express FD card.

1.1 Properties at a Glance

- PC plug-in card (PCI Express x1) for PCI Express slots
- 1, 2, or 4 High-speed CAN channels (ISO 11898-2)
- Complies with CAN specifications 2.0 A/B and FD

- └ CAN FD support for ISO and Non-ISO standard switchable
- └ CAN FD bit rates for the data field (64 bytes max.) from 25 kbit/s up to 12 Mbit/s
- └ CAN FD bit rates from 25 kbit/s up to 1 Mbit/s
- └ CAN bus connection via D-Sub, 9-pin (according to CiA® 303-1)
- └ FPGA implementation of the CAN FD controller
- └ NXP TJA1044GT CAN transceiver
- └ Galvanic isolation on the CAN connection up to 500 V, separately for each CAN channel
- └ CAN termination can be activated through a solder jumper, separately for each CAN channel
- └ PCI Express data transfer via bus master DMA
- └ DMA memory access operations with 32- and 64-bit addresses
- └ Measurement of bus load including error frames and overload frames on the physical bus
- └ Induced error generation for incoming and outgoing CAN messages
- └ 5-Volt supply to the CAN connection through a solder jumper, e.g. for external bus converter
- └ Extended operating temperature range from -40 to 85 °C (-40 to 185 °F)



Note: This manual describes the use of the PCAN-PCI Express card with **Windows**. You find device drivers for **Linux** and the corresponding application information on the provided DVD in the directory branch `Develop` and on our website at www.peak-system.com/linux.

1.2 System Requirements

- └ A vacant PCI Express slot in the computer (specification 2.x)
- └ Windows 10, 8.1, 7 (32/64-bit) or Linux (32/64-bit)

1.3 Scope of Supply

- └ Plug-in card PCAN-PCI Express FD
- └ Slot bracket with D-Sub connectors for the CAN bus (only four-channel version)
- └ Device drivers for Windows 10, 8.1, 7 and Linux (32/64-bit)
- └ CAN monitor PCAN-View for Windows
- └ Programming interface PCAN-Basic for developing applications with CAN connection
- └ Programming interfaces for standardized protocols from the automotive sector
- └ Manual in PDF format

2 Installing the Software and the Card

This chapter covers the software setup for the PCAN-PCI Express FD card in Windows and the installation of the card in the computer.

Install the driver before you install the card.

▶ Do the following to install the driver:

1. Start `Intro.exe` from the supplied DVD.
The navigation program starts.
2. In the main menu, select **Drivers** and click on **Install now**.
3. Confirm the message of the User Account Control related to "Installer database of PEAK Drivers".
The driver setup starts.
4. Follow the program instructions.

▶ Do the following to install the card:



Attention! Electrostatic discharge (ESD) can damage or destroy components on the card. Take precautions to avoid ESD.

1. Shut down the computer.
2. Disconnect the computer's power supply.
3. Open the computer case.
4. Insert the PCI Express card into a vacant PCI Express slot.
5. Close the computer case.
6. Reconnect the computer power supply.
7. Turn on the computer and start Windows.

Windows detects the new hardware and completes the driver installation.

▶ Do the following to check the operational readiness:

1. Open the Windows Start menu.
2. Type `peakcp1` and press .

The information window for PEAK hardware appears. The plug-in card must be displayed in the table on the **CAN Hardware** tab.

3 Connecting a CAN Bus

3.1 Connection over D-Sub connector

The High-speed CAN bus (ISO 11898-2) is connected to the 9-pin D-Sub connector. The pin assignment for CAN corresponds to the specification CiA® 303-1.

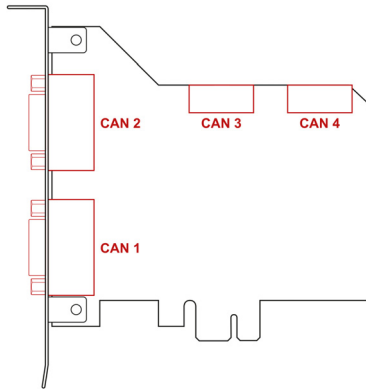


Figure 1: Position of the sockets on the four-channel card (**IPEH-004040**); dual channel card (**IPEH-004027**) only CAN 1 and CAN 2; single channel card (**IPEH-004026**) only CAN 1

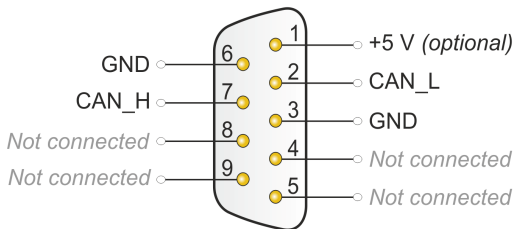


Figure 2: Pin assignment of High-speed CAN; male connector on the card (**IPEH-004026/27/40**)

Low power devices (e.g. bus converters) can be supplied directly with 5 volts over pin 1 of the CAN connector. Pin 1 is not in use at the delivery state. For more information, see the next section 3.2.

The pin assignment between the D-Sub port and the 10-pin connector on the PCAN-PCI Express FD card is as follows:

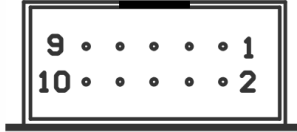


Figure 3: Numbering at the 10-pin connector on the board (IPEH-004040)

Pin	Assignment	Assignment D-Sub
1	+5 V (optional)	1
2	GND	6
3	CAN_L	2
4	CAN_H	7
5	GND	3
6	not connected	8
7	not connected	4
8	not connected	9
9	not connected	5
10	not connected	



Tip: Connect a CAN bus with a different transmission standard via a bus converter. PEAK-System offers different bus converter modules like the PCAN-TJA1054 for a Low-speed CAN bus according to ISO 11898-3.

3.2 Slot Bracket with D-Sub Connectors



Figure 4: Dual channel slot bracket

Only four-channel card (IPEH-004040): To connect a CAN bus to the four-channel card, use the supplied slot bracket. After you have connected the cables from the slot bracket with the 10-pin sockets of CAN port 3 and 4, you can connect the CAN busses with the D-Sub sockets.

3.3 Voltage Supply of External Devices

External devices with low power consumption (e.g. bus converters) can be directly supplied via the CAN connector. With a solder bridge per CAN channel on the PCAN-PCI Express FD board, a 5-Volt supply can optionally be routed to pin 1 of the D-Sub connector. The current output is limited to 50 mA.

▶ Do the following to activate the voltage supply:



Risk of short circuit! Solder with great care to avoid unwanted short circuits on the card.



Attention! Electrostatic discharge (ESD) can damage or destroy components on the card. Take precautions to avoid ESD.

Set the solder bridges corresponding to the desired settings.

Figure 5 on page 14 shows the solder field positions on the four-channel card (**IPEH-004040**). The solder fields for the single and dual channel versions (**IPEH-004026/27**) are located in the same positions and can therefore also be taken from this figure. The table below contains the possible settings.



Risk of short circuit! The 5-Volt supply is not protected separately. Therefore, turn off the computer before you connect and disconnect CAN cables or peripheral systems.

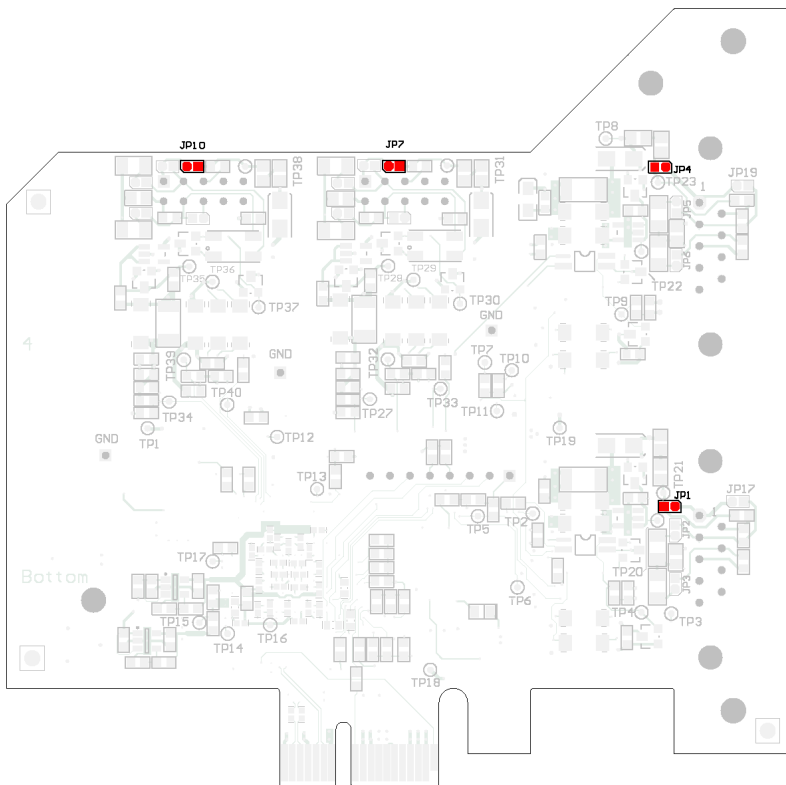






Figure 5: Position of the solder fields on the bottom side of the four-channel card (IPEH-004040) for a 5-Volt supply; dual channel card (IPEH-004027) only CAN 1 and CAN 2; single channel card (IPEH-004026) only CAN 1

D-Sub connector	Solder field	5-Volt supply	
		Without (standard)	Active (Pin 1)
CAN1	JP1		
CAN2	JP4		
CAN3	JP7		
CAN4	JP10		

3.4 Activating the Daisy Chain

Only four-channel card (IPEH-004040): The daisy chain can be activated via solder jumpers on the board to connect a CAN FD optimized connection to an existing CAN bus. This makes interference-free operation possible at higher CAN FD bit rates, because stubs and Y distributions are largely avoided.

Note: The optional 5-Volt supply can not be operated simultaneously with the daisy chain.

When the daisy chain is activated, the pin assignment changes as follows:

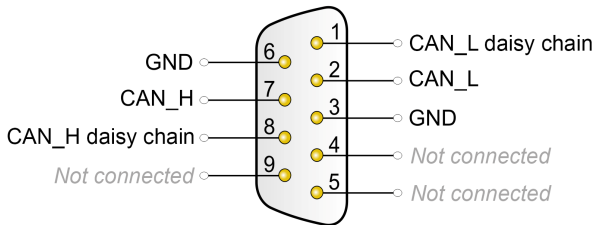


Figure 6: Pin assignment of High-speed CAN and daisy chain; male connector on the four channel card (IPEH-004040)

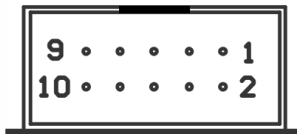


Figure 7: Numbering at the 10-pin connector on the board (IPEH-004040)

Pin	Assignment	Assignment D-Sub
1	CAN-L daisy chain	1
2	GND	6
3	CAN_L	2

Pin	Assignment	Assignment D-Sub
4	CAN_H	7
5	GND	3
6	CAN-H daisy chain	8
7	not connected	4
8	not connected	9
9	not connected	5
10	not connected	

▶ Do the following to activate the daisy chain:



Risk of short circuit! Solder with great care to avoid unwanted short circuits on the card.



Attention! Electrostatic discharge (ESD) can damage or destroy components on the card. Take precautions to avoid ESD.

Set the solder bridges corresponding to the desired settings.

Figure 8 on page 17 shows the solder field positions on the **top** of the four-channel card (**IPEH-004040**). The table below contains the possible settings.

Figure 9 on page 18 shows the solder field positions on the **bottom** of the four-channel card (**IPEH-004040**). The table below contains the possible settings.

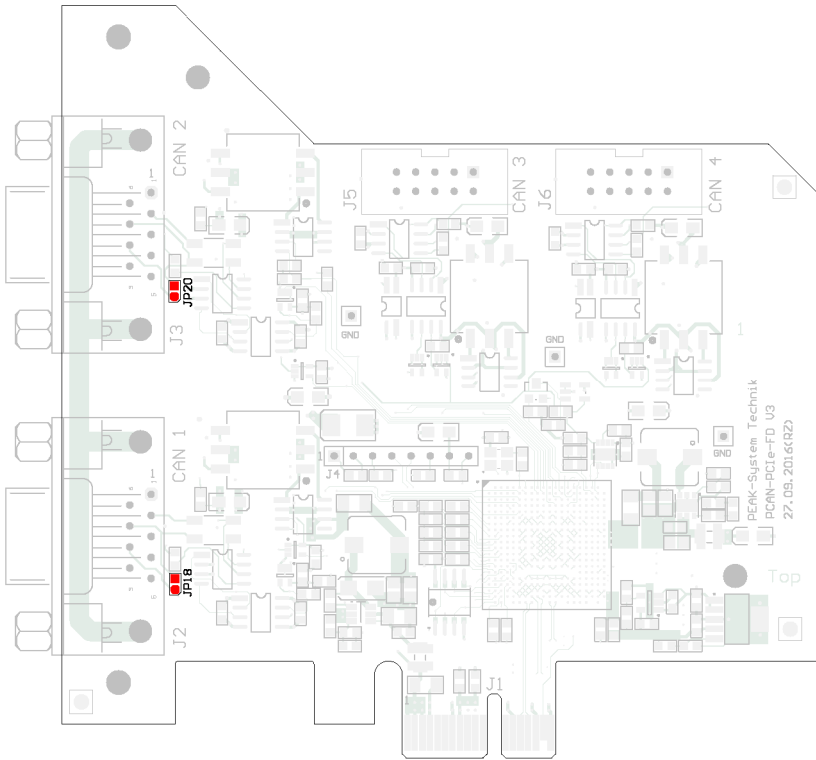


Figure 8: Position of the solder fields on the top side of the card (IPEH-004040) for the activation of the daisy chain

D-Sub connector	Solder field	Daisy chain	
		Without (standard)	Active
CAN1	JP18		
CAN2	JP20		

Attention! For CAN 1 and CAN 2, additional soldering fields on the bottom of the card must be observed. See next page.

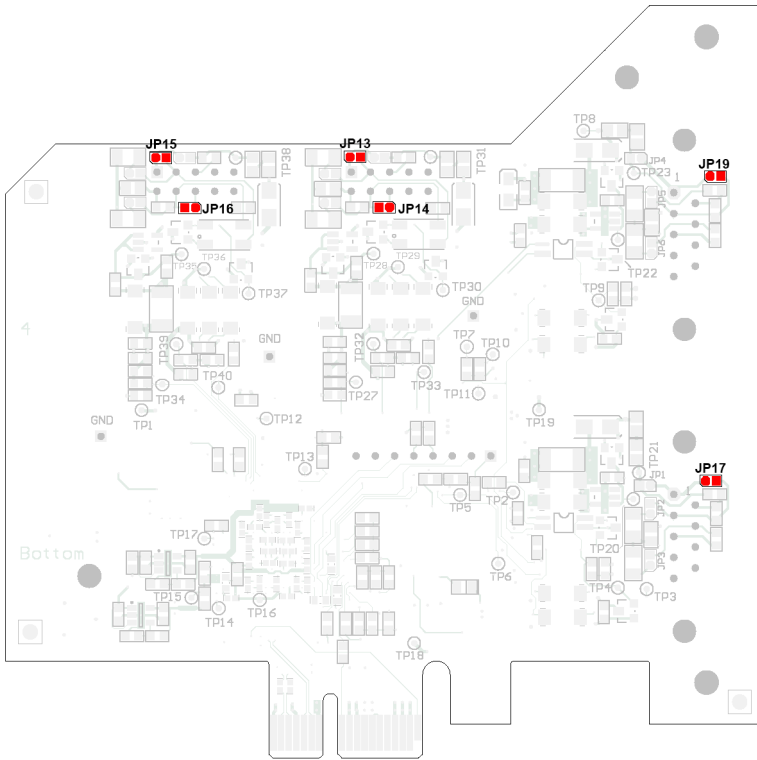


Figure 9: Position of the solder fields on the bottom side of the card (IPEH-004040) for the activation of the daisy chain

D-Sub connector	Solder fields	Daisy chain	
		Without (standard)	Active
CAN1	JP17		
CAN2	JP19		
CAN3	JP13 and JP14		
CAN4	JP15 and JP16		



Attention! For CAN 1 and CAN 2, additional soldering fields on the top of the card must be observed. See previous page.

3.5 Activating the Internal Termination

The internal termination can be activated by solder jumpers on the PCAN-PCI Express FD board, to terminate one end of the CAN bus with 120 Ohms. At delivery the termination is not activated. A High-speed CAN bus (ISO 11898-2) must be terminated on both ends with 120 Ohms. Otherwise disturbances may arise.

▶ Do the following to activate the internal termination:



Risk of short circuit! Solder with great care to avoid unwanted short circuits on the card.



Attention! Electrostatic discharge (ESD) can damage or destroy components on the card. Take precautions to avoid ESD.

Set the solder bridges corresponding to the desired settings.

Figure 10 on page 20 shows the positions of the solder fields of the four-channel card (**IPEH-004040**). The solder fields for the single and dual channel card (**IPEH-004026/27**) are located in the same positions and can therefore also be taken from Figure 10. The table below contains the possible settings. The table below contains the possible settings.

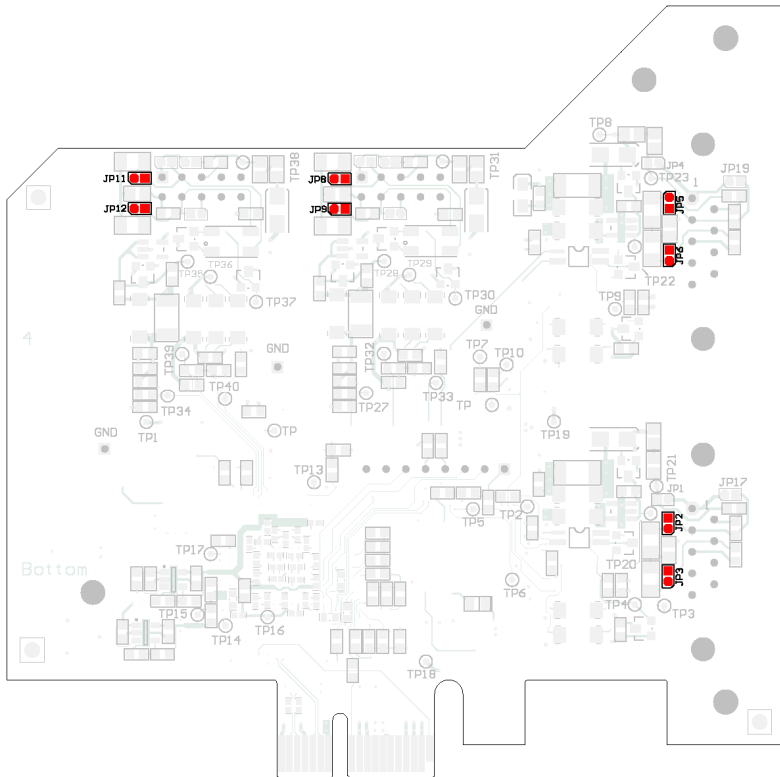


Figure 10: Position of the solder fields on the bottom side of the four-channel card (**IPEH-004040**) for the internal termination; dual channel card (**IPEH-004027**) only CAN 1 and CAN 2; single channel card (**IPEH-004026**) only CAN 1

D-Sub connector	Solder fields	Internal termination	
		Without (standard)	Active
CAN1	JP2 and JP3		
CAN2	JP5 and JP6		
CAN3	JP8 and JP9		
CAN4	JP11 and JP12		

3.6 Cabling

3.6.1 Termination

The High-speed CAN bus (ISO 11898-2) must be terminated with 120 ohms at both ends. The termination prevents interfering signal reflections and ensures the proper operation of the transceivers of the connected CAN nodes (CAN interfaces, control devices).

The PCAN-PCI Express FD card has an optional internal termination with 120 ohms. For more information, see chapter 3.4.

3.6.2 Example of a Connection

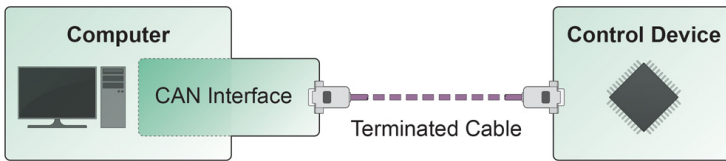


Figure 11: Simple CAN connection

This example shows a connection between the PCAN-PCI Express FD card and a control unit. The connection cable is terminated with 120 ohms at both ends.


3.6.3 Maximum Bus Length

High-speed CAN networks have bit rates up to 1 Mbit/s. The maximum bus length primarily depends on the bit rate.

The following table shows different maximum possible CAN bus length with different bit rates:

Bit rate	Bus length
1 Mbit/s	40 m
500 kbit/s	110 m
250 kbit/s	240 m
125 kbit/s	500 m
50 kbit/s	1.3 km
25 kbit/s	2.5 km

The listed values have been calculated on the basis of an idealized system and can differ from reality.

 **Note:** For CAN FD, the same maximum bus lengths apply as for CAN, despite the higher data bit rate of CAN FD. The dependency is based on the bit rate during the arbitration, called nominal bit rate. The nominal bite rate at CAN FD can be up to 1 Mbit/s.

4 Software and API

This chapter covers the provided software PCAN-View and the programming interface PCAN-Basic.

4.1 Monitor Software PCAN-View

PCAN-View is a simple Windows software to view, transmit and log CAN and CAN FD messages.



Note: This chapter describes the use of PCAN-View with a CAN FD card.

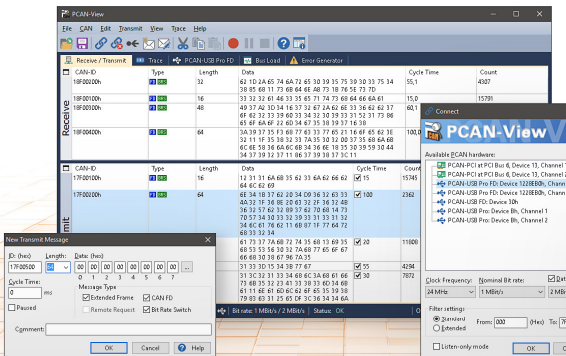


Figure 12: PCAN-View for Windows

▶ Do the following to start and initialize PCAN-View:

1. Open the Windows Start menu and select **PCAN-View**.

The **Connect** dialog box appears.

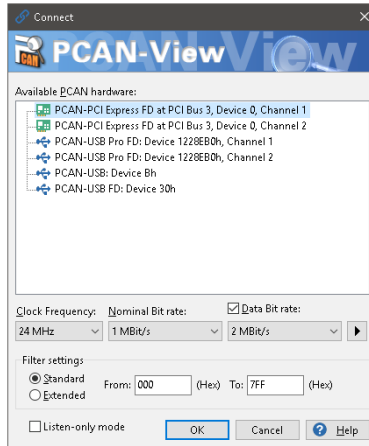


Figure 13: Selection of the hardware and parameters

2. Select an interface from the list.
3. From the drop-down menu, choose a **Clock Frequency**. The selectable bit rates in the following are based on this setting.
4. From the drop-down list, select a **Nominal Bit rate**, which is used for the arbitration phase (max. 1Mbit/s).
5. Enable the **Data Bit Rate** checkbox.
6. From the drop-down menu, choose an additional **Data Bit rate** for the CAN FD bus. The bit rate selected here is used to transfer the data fields of a CAN FD frame with a higher bit rate.



Note: Both transmission rates must match those which are used by all nodes on the CAN bus.



Tip: Create custom bit rates by using the arrow button (▶).

7. Under **Filter settings**, you can limit the range of CAN IDs to be received, either for standard frames (11-bit IDs) or for extended frames (29-bit IDs).
8. Activate the **Listen-only mode** if you do not actively participate in the CAN traffic and just want to observe. This also avoids an unintended disruption of an unknown CAN environment (e.g. due to different bit rates).
9. Confirm the settings in the dialog box with **OK**. The main window of PCAN-View appears (see Figure 14).

4.1.1 Receive/Transmit Tab

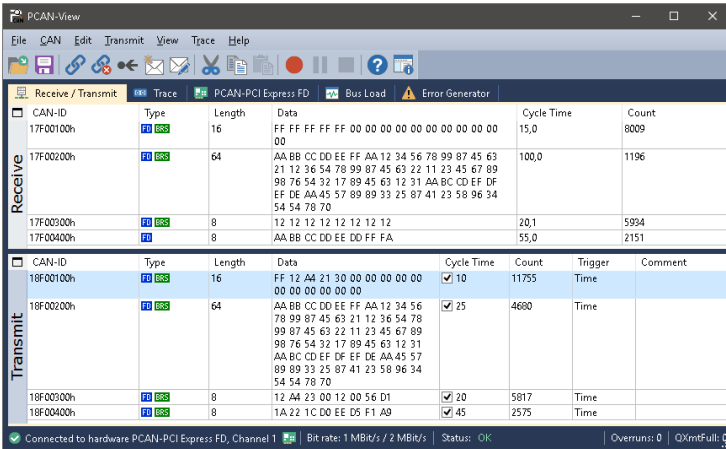


Figure 14: Receive/Transmit Tab

The **Receive/Transmit** tab is the main element of PCAN-View. It contains two lists, one for received messages and one for the transmit messages. The CAN data format is hexadecimal by default.

▶ Do the following to transmit one CAN message with PCAN-View:

1. Select the menu command **Transmit > New Message** (alternatively or **Ins**).

The **New Transmit Message** dialog box appears.

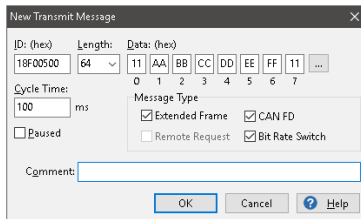




Figure 15: Dialog box New Transmit Message

2. Enable the **CAN FD** checkbox to define a CAN FD message with a maximum **Length** of 64 data bytes.
3. Enter the **ID**, the data **Length**, and the CAN message **Data**. With a length of more than 8 bytes, click on  and enter the data bytes into the editor.



Note: With the program version 4 of PCAN-View, the DLC field was renamed to **Length**. Latter reflects the actual data length.

4. Enter a value into the **Cycle Time** field to choose manually or periodically message transmission. Enter a value greater than 0 to transmit periodically. Enter the value 0 to transmit only manually.
5. Enable the **Bit Rate Switch** checkbox, that the data of a CAN FD message is transmitted with the selected **Data Bit Rate**.
6. Confirm the entries with **OK**.
The created transmit message appears on the **Receive/Transmit** tab.
7. Trigger selected transmit messages manually with the menu command **Transmit > Send** (alternatively  bar). The manual transmission for CAN messages being transmitted periodically is carried out additionally.



Tip: Under the menu command **File > Save**, you can save the current transmit messages into a transmit list. Saved transmit lists are available for reuse.

4.1.2 Trace Tab

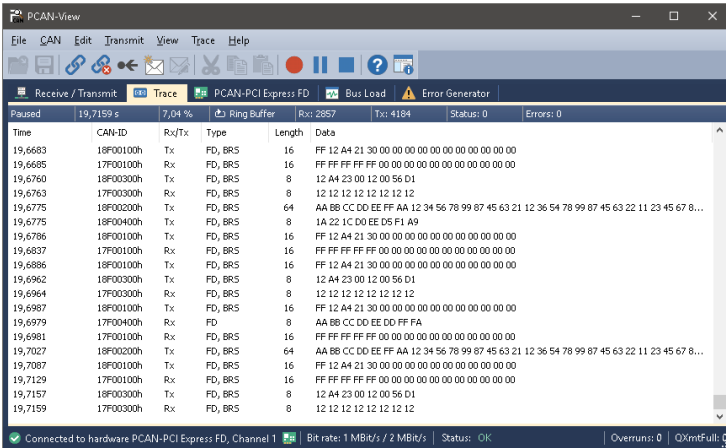


Figure 16: Trace Tab

On the **Trace** tab, the data tracer (data logger) of PCAN-View is used for logging the communication on a CAN bus. During this process the messages are cached in the working memory of the PC. Afterwards they can be saved to a file.

The Tracer runs either in linear or in ring buffer mode. The linear buffer mode stops the Tracer as soon as the buffer is full. The ring buffer mode overwrites the oldest messages by new ones as soon as the buffer is full.

4.1.3 PCAN-PCI Express FD Tab

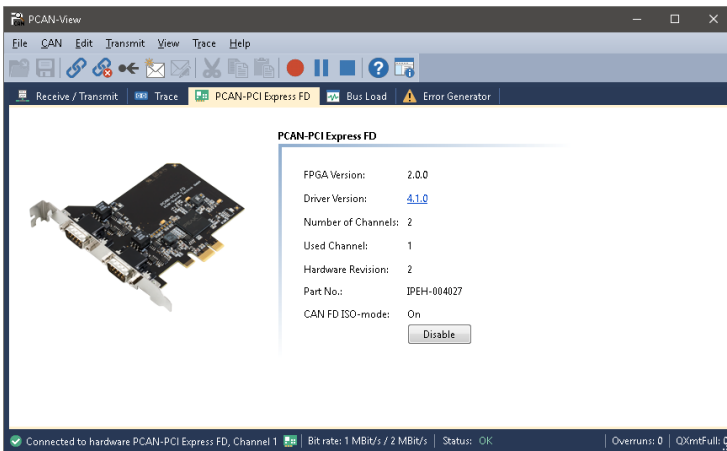


Figure 17: PCAN-PCI tab

The **PCAN-PCI Express FD** tab contains some detailed information about the hardware and driver.

CAN FD ISO-mode

The defined in the ISO 11898-standard is not compatible with the original protocol. PEAK-System takes this into account by supporting both protocol versions with their CAN FD interfaces.

If required, the user can switch to the CAN FD protocol used in the environment with the **Enable / Disable** button („Non-ISO“ and „ISO“).

4.1.4 Bus Load Tab

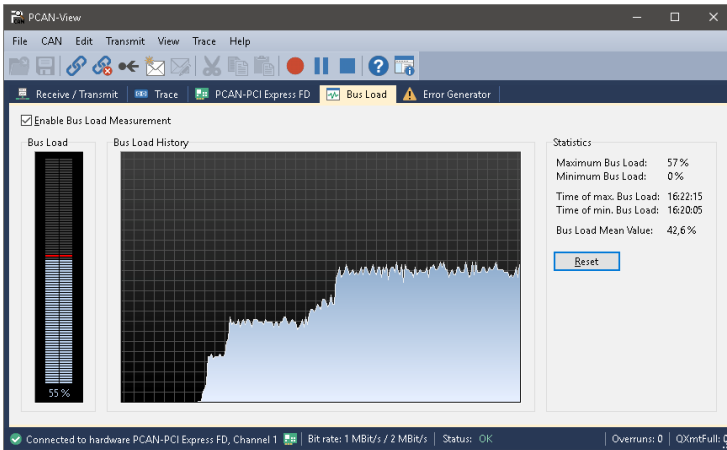


Figure 18: Bus load tab

On the **Bus Load** tab, the current bus load, time course, and statistical information of the CAN channel are displayed. The CAN bus load reflects the utilization of transmission capacity.

4.1.5 Error Generator Tab

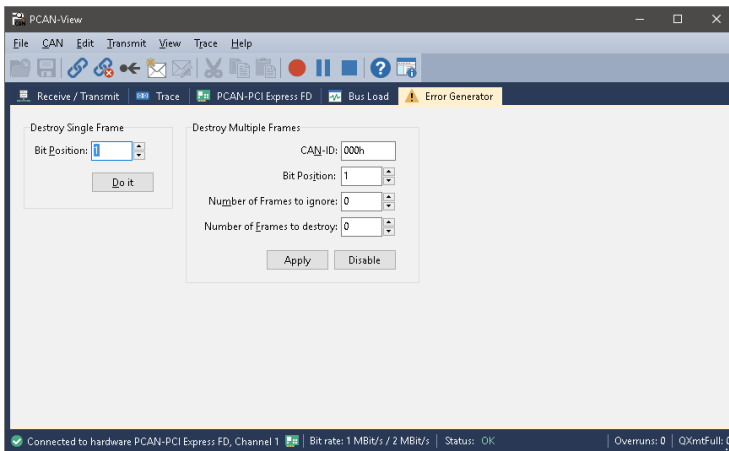


Figure 19: Error Generator tab

Via the **Error Generator** tab, the communication on the CAN bus can be disturbed for testing purposes by 6 consecutive dominant bits. This is a violation of the CAN protocol on the CAN bus which must be recognized as an error by the connected CAN nodes.

You can destroy CAN frames with the error generator by one of two methods:

- once after activation
- repeatedly at specific intervals related to a CAN ID

The **Destroy Single Frame** area refers to the next CAN frame that is recognized by the plug-in card after activation.

▶ Do the following to destroy a single CAN frame:

1. Enter the **Bit Position** where in the CAN frame the error is to be generated. The count includes the stuff bits.

2. Execute the destroy action with **Do it**.

The next received or transmitted CAN frame will be destroyed at the selected bit position.

The **Destroy Multiple Frames** area refers to a CAN ID whose frames are to be destroyed in specific intervals.

▶ Do the following to destroy multiple CAN frames:

1. Enter the **CAN ID** of the frame to be destroyed.
2. Enter the **Bit Position** where in the CAN frame the error is to be generated. The count includes the stuff bits.
3. The **Number of Frames to ignore** field specifies the number of CAN frames with the given ID that are ignored before a frame is destroyed.
4. The **Number of Frames to destroy** field specifies the number of CAN frames with the given ID that are destroyed consecutively.
5. Confirm the entries with **Apply** to activate the error generator.
6. Stop destroying further CAN frames with **Disable**.

4.1.6 Status Bar

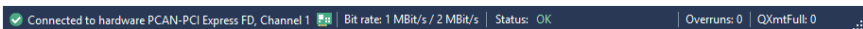


Figure 20: Display of the Status Bar

The status bar shows information about the current CAN connection, about error counters (Overruns, QXmtFull) and shows error messages.

You can find further information about the use of PCAN-View in the help which you can invoke in the program via the **Help** menu or with the **F1** key.

4.2 Linking Own Programs with PCAN-Basic Version 4 or Higher

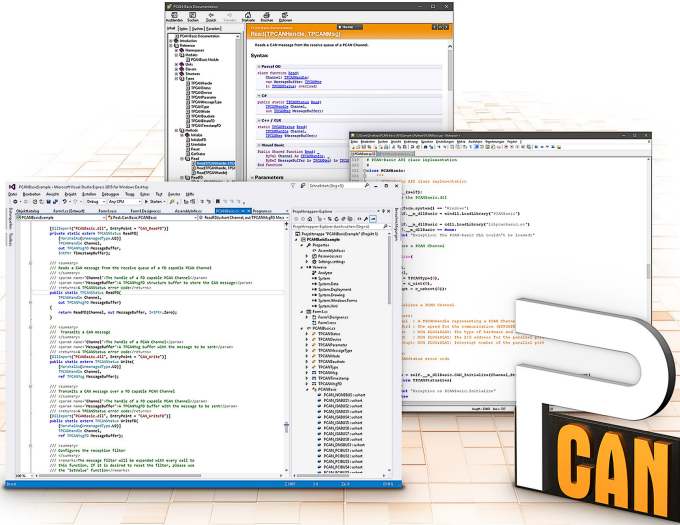


Figure 21: PCAN-Basic

On the provided DVD, you can find files of the PCAN-Basic programming interface in the directory branch `Develop`. This API provides basic functions for linking own programs to CAN and CAN FD interfaces by PEAK-System and can be used for the following operating systems:

- └ Windows 10, 8.1, 7 (32/64-bit)
- └ Windows CE 6.x (x86/ARMv4)
- └ Linux (32/64-bit)

The API is designed for cross-platform use. Therefore, software projects can easily be ported between platforms with low efforts. For all common programming languages, examples are available.

Beginning with version 4, PCAN-Basic supports the new CAN FD standard (CAN with Flexible Data Rate) which is primarily characterized by higher bandwidth for data transfer.

4.2.1 Features of PCAN-Basic

- └ API for developing applications with CAN and CAN FD connection
- └ Access to the CAN channels of a PCAN-Gateway via the new PCAN-LAN device type
- └ Supports the operating systems Windows 10, 8.1, 7 (32/64-bit), Windows CE 6.x, and Linux (32/64-bit)
- └ Multiple PEAK-System applications and your own can be operated on a physical channel at the same time
- └ Use of a single DLL for all supported hardware types
- └ Use of up to 16 channels for each hardware unit (depending on the PEAK CAN interface used)
- └ Simple switching between channels of a PEAK CAN interface
- └ Driver-internal buffer for 32,768 messages per CAN channel
- └ Precision of time stamps on received messages up to 1 μ s (depending on the PEAK CAN interface used)
- └ Supports PEAK-System's trace formats version 1.1 and 2.0 (for CAN FD applications)
- └ Access to specific hardware parameters, such as listen-only mode
- └ Notification of the application through Windows events when a message is received

- └ Extended system for debugging operations
- └ Multilingual debugging output
- └ Output language depends on operating system
- └ Debugging information can be defined individually
- └ Thread-safe API



Tip: An overview of the API functions is located in the header files. You can find detailed information about the PCAN-Basic API on the provided DVD in the text and help files (file name extensions `.txt` and `.chm`).

4.2.2 Principle Description of the API

The PCAN-Basic API is the interface between the user application and device driver. In Windows operating systems this is a DLL (Dynamic Link Library).

The sequence of accessing the CAN interface is divided into three phases:

1. Initialization
2. Interaction
3. Completion

Initialization

A channel must be initialized before using it. This is done by the simple call of the function `CAN_Initialize` for CAN and `CAN_InitializeFD` for CAN FD. Depending on the type of the CAN hardware, up to 16 CAN channels can be opened at the same time. After a successful initialization the CAN channel is ready. No further configuration steps are required.

Interaction

For receiving and transmitting messages, the functions `CAN_Read` and `CAN_Write` as well as `CAN_ReadFD` and `CAN_WriteFD` are available.

Additional settings can be made, e.g. setting up message filters for specific CAN IDs or the listen-only mode for the CAN controller.

When receiving CAN messages, events are used for an automatic notification of an application (client). This offers the following advantages:

- └ The application no longer needs to check for received messages periodically (no polling).
- └ The response time at reception is reduced.

Completion

To end the communication, the function `CAN_Uninitialize` is called in order to release the reserved resources for the CAN channel, among others. In addition the CAN channel is marked as "Free" and is available to other applications.

4.2.3 Notes about the License

Device drivers, the interface DLL, and further files needed for linking are property of the PEAK-System Technik GmbH and may be used only in connection with a hardware component purchased from PEAK-System or one of its partners. If a CAN hardware component of third-party suppliers should be compatible to one of PEAK-System, then you are not allowed to use or to pass on the driver software of PEAK-System.

If a third-party supplier develops software based on the PCAN-Basic and problems occur during the use of this software, consult the software provider.

5 Technical specifications

Connectors

Computer	PCI Express x1 (1 lane); electromechanical specification 2.x
CAN	D-Sub (m), 9 pins Pin assignment according to specification CiA® 303-1

CAN

Protocols	CAN FD ISO 11898-1:2015, CAN FD non-ISO, CAN 2.0 A/B
Physical transmission	ISO 11898-2 (High-speed CAN)
CAN bit rates	25 kbit/s - 1 Mbit/s
CAN FD bit rates	25 kbit/s – 12 Mbit/s
Controller	FPGA implementation
Transceiver	NXP TJA1044GT
Galvanic isolation	up to 500 V, separate for each CAN channel
Supplying external devices	D-Sub pin 1; 5 V, max. 50 mA disabled at delivery
Daisy chain (only IPEH-004040)	via solder bridges, disabled at delivery
Internal termination	via solder bridges, disabled at delivery

Power supply

Current consumption	Product version	at 3.3 V pin	at 12 V pin
	Single Channel	max. 200 mA	max. 50 mA
	Dual Channel	max. 200 mA	max. 70 mA
	Four Channel	max. 200 mA	max. 100 mA

Environment

Operating temperature	-40 - +85 °C
Temperature for storage and transport	-40 - +125 °C
Relative humidity	15 - 90 %, not condensing

Measures

Size	PCB: 121 x 114 mm (H x W) See also dimension drawing in Appendix B on page 40
Weight	Single Channel: 55 g Dual Channel: 66 g Four Channel: 73 g Dual channel slot bracket (D-Sub): 40 g (only IPEH-004040)

Conformity

EMV	Directive 2014/30/EU DIN EN 55024:2016-05 DIN EN 55032:2016-02
RoHS 2	Directive 2011/65/EU DIN EN 50581 VDE 0042-12:2013-02


Appendix A CE Certificate

EU Declaration of Conformity



This declaration applies to the following product:

Product name: PCAN-PCI Express FD
Item number(s): IPEH-004026/27/40
Manufacturer: PEAK-System Technik GmbH
Otto-Roehm-Strasse 69
64293 Darmstadt
Germany

 We declare under our sole responsibility that the mentioned product is in conformity with the following directives and the affiliated harmonized standards:

EU Directive 2011/65/EU (RoHS 2)

DIN EN 50581 VDE 0042-12:2013-02

Technical documentation for the assessment of electrical and electronic products with respect to the restriction of hazardous substances;
German version EN 50581:2012

EU Directive 2014/30/EU (Electromagnetic Compatibility)

DIN EN 55024:2016-05

Information technology equipment – Immunity characteristics – Limits and methods of measurement (CISPR 24:2010 + Cor.:2011 + A1:2015);
German version EN 55024:2010 + A1:2015

DIN EN 55032:2016-02

Electromagnetic compatibility of multimedia equipment - Emission Requirements (CISPR 32:2015);
German version EN 55032:2015

Darmstadt, 22 February 2019

A handwritten signature in black ink, appearing to read "Uwe Wilhelm".

Uwe Wilhelm, Managing Director

Appendix B Dimension Drawing

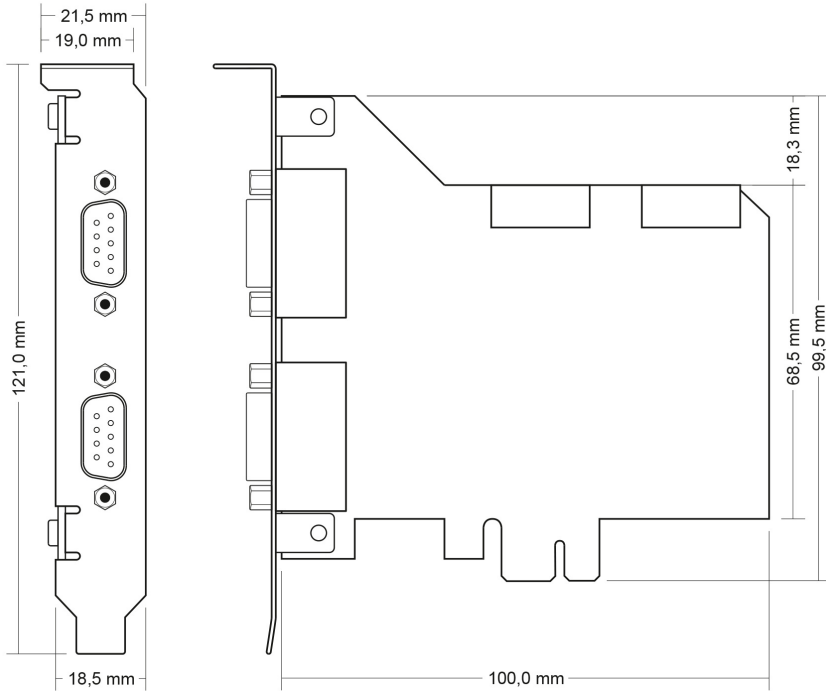


Figure 22: Dimension drawing PCAN-PCI Express FD
The figure does not show the actual size of the product.

Appendix C Quick Reference

Software/Hardware Installation under windows

Install the driver from the supplied DVD, before you insert the plug-in card. Turn off the computer and insert the PCAN-PCI Express FD into an available PCI Express slot.

The new hardware is detected at the next Windows start and the driver is initialized. Check the operational readiness. Open the Windows Start menu. Type `peakcp1` and press **Enter**. An information window for PEAK Hardware opens. The plug-in card must be displayed in the table on the **CAN Hardware** tab.

Getting started under windows

Run the CAN monitor PCAN-View from the Windows Start menu as a sample application for accessing the card. For initialization of the PCI Express card select the desired CAN channel and CAN bit rate.

High-speed CAN connector (D-Sub, 9 pins)

